



20-Minute Fire Rated Wood Jambs and Sidelites



Over the years, **Woodwork Manufacturing & Supply** has been known by architects and contractors for high quality architectural wood products.

Throughout those years, we have built a reputation based on a commitment to service and quality, with a major emphasis in our company on fire rated wood doors. Many of these doors were furnished for projects that, due to stringent fire codes, were limited in the types of jambs and sidelites that they could use. While metal became more frequently specified to ensure code conformance, the aesthetics and natural beauty of wood was sacrificed.

Now **Woodwork Manufacturing & Supply** is pleased to announce that the warmth and beauty of wood is now available in our line of 20 minute fire rated jambs and sidelites.

Our fire rated wood jambs can be furnished in a wide variety of hardwoods or softwoods. They are approved for installation in one hour walls 3-3/4" and wider. We have the capability to accommodate virtually any opening size up to a maximum width and height of 8'0"x9'0". The profiles shown illustrate the various design options we can offer. Each of these is available with optional standard casing to trim the opening. How-



ever, because of our milling capabilities, we are able to match virtually any custom design that may be specified.

Woodwork Manufacturing & Supply is also licensed to pre-machine our fire rated jambs for approved hardware. You can be assured that your jambs will be properly pre-machined to your hardware specifications. This makes for added convenience in that; you only have to deal with one company for both the manufacture and pre-machining of your products. With the restrictions and revisions to the regulations governing machining and labeling of 20-minute fire rated doors and jambs, the experience and service that we can offer in our pre-machining capabilities for both has never been more important.

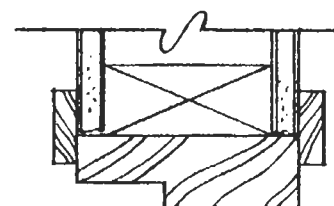
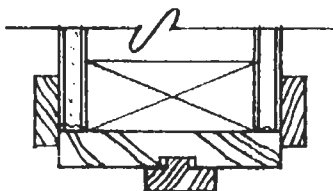
TYPICAL JAMB PROFILES

All profiles available for installation in one-hour walls 3-3/4" or wider.
Maximum opening sizes are 8'0"x9'0"

T-STOP	SINGLE RABBET
---------------	----------------------

*3/4"X3-3/4" Minimum stock
with 1/2"x1-1/2" casing and stop*

*1-1/4" Minimum stock with
1/2"x1-1/2" casing.*



Many projects, such as tenant improvement work, call for sidelites to compliment the door assembly and add character and openness to the office setting. With our 20-minute rated wood sidelites, it is now possible to specify this feature in situations where codes dictate a fire rating. They are available in hardwoods such as red or white oak, cherry, walnut, mahogany, birch or maple, and are approved for installation in one hour walls 3-3/4" or wider.

The profiles and elevations below show available sidelite configurations. All fire-rated sidelites come furnished pre-assembled for easy installation.

Woodwork Manufacturing & Supply's 20-minute fire rated sidelites also offer the flexibility of being able to specify two different types of glass; standard 1/4" wire glass, or clear FireLite.

Each of our fire-rated jambs and sidelites come with a Warnock Hersey International, Inc. 20-minute label. The application of this label to our products is the result of having passed a series of fire endurance tests, performed at their testing laboratories in Pittsburg, CA. All tests performed conform to the standards of the ASTM, NFPA, UL, and UBC.

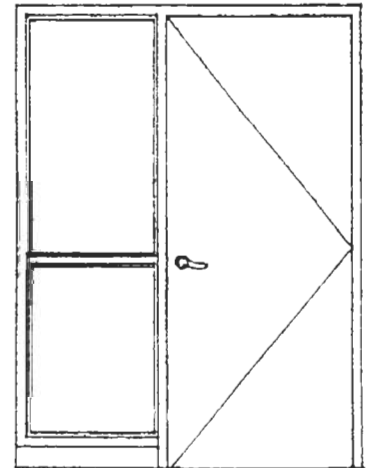


*When you specify 20-minute jambs and/or sidelites by **Woodwork Manufacturing & Supply**, you can be assured that no matter what the size of your project, quality products and service will be our top priority.*

20-MINUTE FIRE RATED SIDELITES

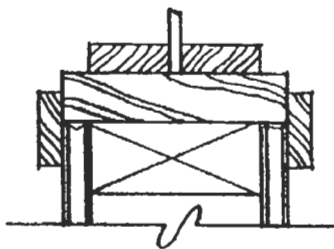
TYPICAL SIDELITE DETAILS

All 20-minute fire rated sidelites are furnished pre-assembled and include our approved clips for easy installation. 1/4" wired glass or clear FireLite glass may be used with Metacaulk (TM) for glazing. Maximum relite size is 24"x100" with a mullion. Maximum exposed light is 1200 sq. inches per pane or 2400 sq. inches maximum for each full height sidelite.



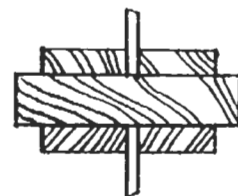
STANDARD

1-1/16" Minimum stock with
5/8"x1-1/2" stops.



TYPICAL MULLION DETAIL

1-1/16" Minimum stock with
5/8"x1-1/2" stops



**DON'T COMPROMISE THE BEAUTY OF YOUR PROJECT
DUE TO STRINGENT FIRE CODES**

Now you can combine today's fire codes with the character that only wood can offer, with quality 20-minute fire rated jambs and sidelites by **Woodwork Manufacturing & Supply**

No matter how big or small the project, our plant, located in Hutchinson, KS can accommodate your needs.

For information or quotations, call, write or fax.
Woodwork Manufacturing & Supply



NORTH AMERICAN
BUILDING
MATERIAL
DISTRIBUTION
ASSOCIATION



Woodwork
Manufacturing & Supply